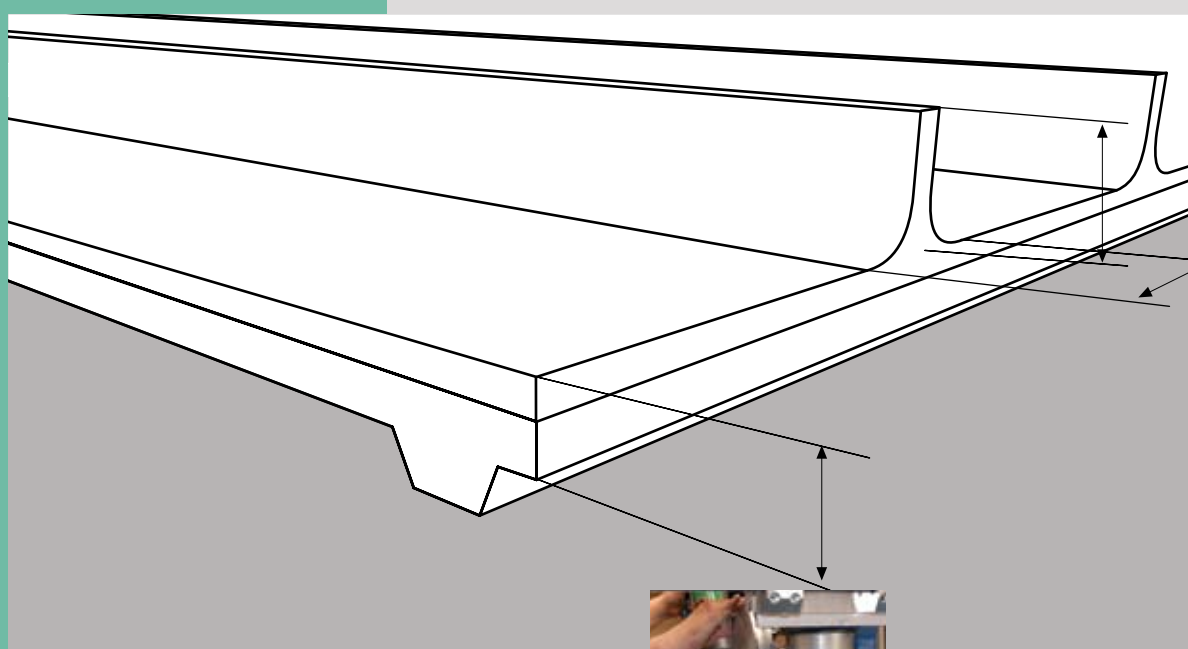




Conveyor Belts - Our product range



- » Standard program
- » Production engineering
- » Joint techniques
- » Side walls
- » Cleats
- » V-guides
- » Special surface coating
- » Tools

Bode Belting

More than 30 years experience in the industry, combined with state-of-the-art machinery and a staff of motivated employees, this is the foundation of our innovative company.



Decades of experience in the global market, with high-quality products, and in solving challenging requirements in the materials handling industry, this is what makes us a competent partner for all of our clients.

Working in close partnership with very carefully selected firms, which only apply state-of-the-art production methods, guarantees products of the highest quality.

Our products are developed at various institutions, at home and abroad, as well as in the laboratories of our partner firms and are manufactured to our strict requirements.

Last but not least, our quality performance, price, and on-time delivery is based on our efficient organization, both in fabrication and manufacturing.

Our motivated employees are always ready to serve you.

Solutions for many types of industries

Our products are used in almost all branches. Just ask us – we will find the right solution for your particular application.

Figure 1:
Belts for the metal and steel industry (e.g. belts for coiling machine)



Figure 2:
Baggage belts at an airport facility



Figure 3:
Processing belts used in the food industry

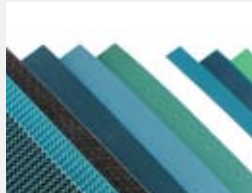


Figure 4:
Conveyor belts for in-plant logistics processes



Conveyor belts

Bode Belting conveyor belts are made of high-quality polyester fabrics and are available in either monofilament or flexible fabrics. Polyvinylchloride (PVC) or Polyurethane (PU) is used as coating materials or as inner layer. Using those two raw materials as compound or in an array of variations for the design of a conveyor belt, will inevitably guarantee the proper function of your application. Our standard product range covers approx. 95% of all uses. When modifying the belt quality by adding different surface embossing, cleats, V-guides, side walls and other profiles, suitable product can be designed for almost any application requirements.



Other special belt qualities (raw material compounds) are also available. The joint technology for endless splicing the belts has been improved over the past 20 years so much, that the strength of the joint can now meet almost all requirements of any application.

We will be happy to send you our technical overview of our standard product range.



Product engineering

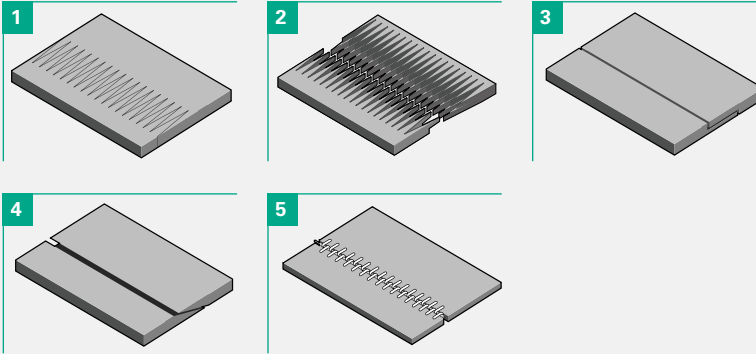
Figure left hand side:
Semi-automatic HF
welding machine

Figure right hand side:
Automatic weld-
ing of side walls



Thanks to the extensive machinery and equipment to our disposal, we can now find a fitting solution for all your applications.

Joint techniques



Type of joint	
1	Finger splice 90° <ul style="list-style-type: none"> • Standard for all thermoplastic belts • Finger geometry: 70 x 15 mm • Additional geometries are available
2	Overlap Finger splice 90° <ul style="list-style-type: none"> • For small pulley diameters • Guarantee for high strength • Finger geometry: 50 x 15 mm • Additional geometries are available
3	Step splice 90° or Angle <ul style="list-style-type: none"> • Different splicing length available • Recommended for angular conveyors
4	Grind splice / Angle <ul style="list-style-type: none"> • For all non-thermoplastic belts
5	Fastener <ul style="list-style-type: none"> • For quick belt exchange • Huge variations of fasteners are available

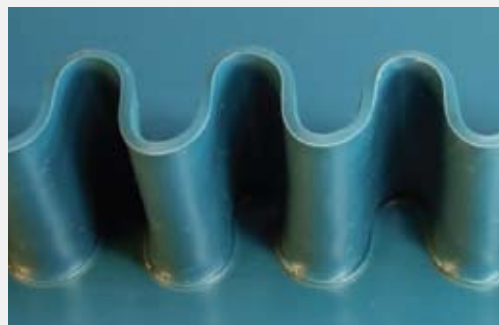


In addition to the joining techniques mentioned above, different designs are available upon request. State-of-the-art heating presses are used to weld the joints together.

Side walls

Figure top
PU and PVC Side Walls, also available without base for very small drum diameters

Figure bottom
Celloflex Side Walls available in various heights



Our side walls made from PVC, PU, and Celloflex are available in a variety of dimensions (height, base width, etc.) and colours. Please ask for our technical data sheets for an overview of the designs. We will be happy to assist you in the selection of the right side walls.

Cleats



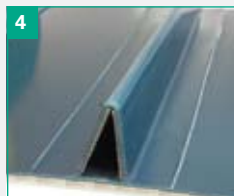
1. T-shape
Available in all standard heights and colours made from PVC and PU



2. TN – shape
Available in all standard heights and colours made from PU



3. Rubber cleats
Available in all standard heights and various designs



4. Cleat made of Belt material
Available for almost all conveyor belt type and in any desired height

For detailed information of our available cleat designs, please request our customer information sheets »cleats«.

V-guides

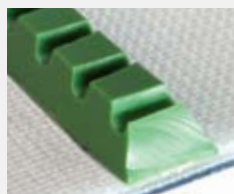


V-guides					
Description	Shape	Dimensions	PVC	PU	Rubber
K 8	Trapezoid	8 x 5 mm	•	•	
K 10	Trapezoid	10 x 6 mm	•	•	•
K 13	Trapezoid	13 x 8 mm	•	•	•
K 17	Trapezoid	17 x 11 mm	•	•	•
V 12	Square	12 x 12 mm	•		
V 20	Rectangle	20 x 15 mm	•		
V 30	Rectangle	30 x 8 mm	•		

Figure left hand side:
Trapezoid-shape
V-guide



Figure right hand side:
Trapezoid shape
V-guide, notched



Besides the standard V-guides listed in the table above, many special profiles are available in different colours, much other geometries are available on request.

Special surface coating



We are coating belts up to 2,500 mm

We are the experts, when it comes to coating of belts. Our state-of coating facilities allow us to meet almost all our customers' requirements.

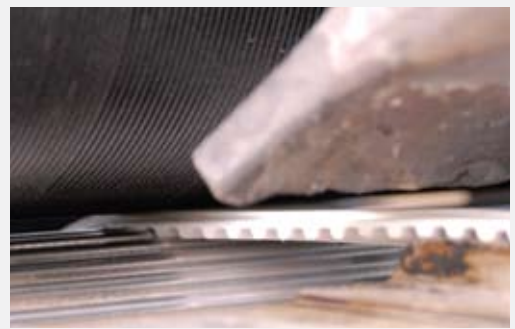
- » surface coating up to 2,500 mm belt width
- » foil coating, using thermal embossing processes up to 150 mm belt width
- » surface grinding and finishing up to 300 mm belt width

We coat all timing belts and commercial conveyor belts.

Request our sample catalogue
 »Surface Coatings – Our Standard program«



Surface grinding and finishing for belts up to 300 mm are available – for conveyor belts as well as timing belts.



Foil coating including embossing welding processes till 150 mm width.

Tools

Figure top left:
Timing belt punching machine



Figure top right:
Timing belt press



Figure bottom left:
Ply separator



**Heating press for
conveyor belt**



We also offer the respective processing equipment for a large number of our products.

Contact us

Bode Belting GmbH
Reeperbahn 35 / House 2
D-21481 Lauenburg
Germany

T + 49.(0)41 53.55 86 57
F + 49.(0)41 53.55 86 75
info@bodebelting.de
www.bodebelting.de

Ask us for one of our partners in your area



Because of continuous development, the presented data is subject to alteration. This data replaces that included in previous publications. Bode Belting GmbH excludes any liability for the incorrect use of the stated information. Subject to the general terms and conditions of sale and delivery, as applied by its operating companies, are all activities performed and services rendered by Bode Belting GmbH.

© Bode Belting GmbH, 2007

Your local partner: