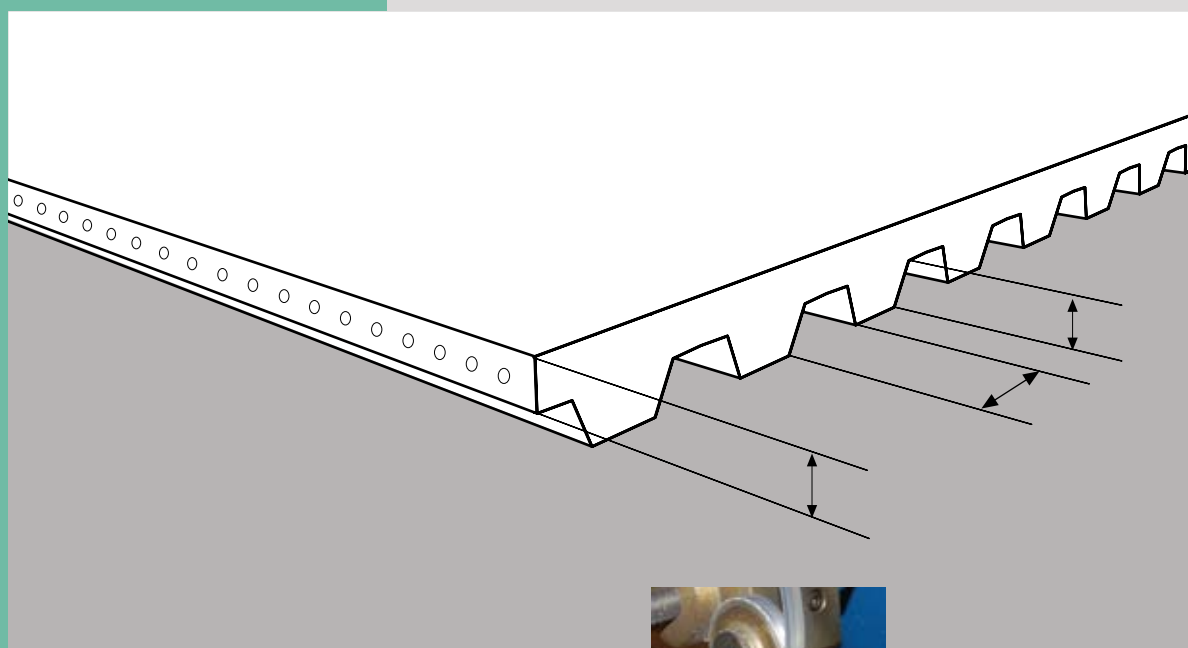




Timing Belts – Our product range



- » **Standard program**
- » **Production engineering**
- » **Joint techniques**
- » **Cleats**
- » **V-guides**
- » **Special surface coating**
- » **Sprockets**
- » **Tools**

Bode Belting

More than 30 years experience in the industry, combined with state-of-the-art machinery and a staff of motivated employees, this is the foundation of our innovative company.



Decades of experience in the global market, with high-quality products, and in solving challenging requirements in the materials handling industry, this is what makes us a competent partner for all of our clients.

Working in close partnership with very carefully selected firms, which only apply state-of-the-art production methods, guarantees products of the highest quality .

Our products are developed at various institutions, at home and abroad, as well as in the laboratories of our partner firms and are manufactured to our strict requirements.

Last but not least, our quality performance, price, and on-time delivery is based on our efficient organization, both in fabrication and manufacturing.

Our motivated employees are always ready to serve you.

Solutions for many types of industries

Our products are used in almost all branches. Just ask us – we will find the right solution for your particular application.

Figure 1:
Glass industry



Figure 2:
Timber processing

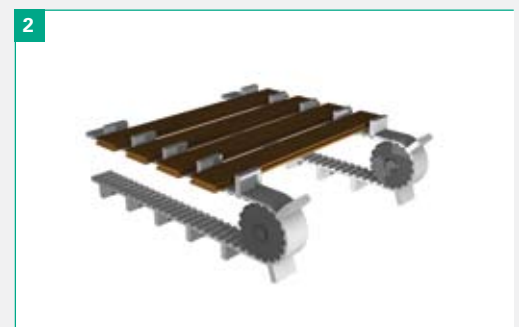


Figure 3:
Linear drive

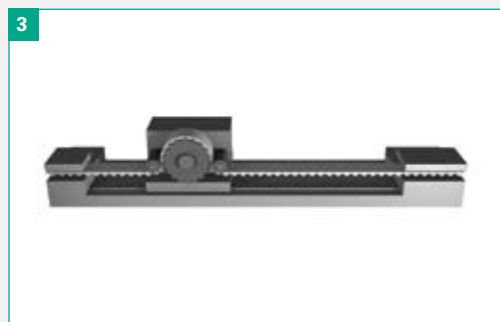


Figure 4:
Packaging industry



Standard program

Our products offer the following features:

- » abrasion resistance
- » zero maintenance
- » synchronous operation
- » high efficiency factor (up to 98 %)
- » quiet run and light-weight
- » temperature resistance from -5 °C to + 80 °C
- » resistance to humidity
- » resistance to UV and ozone
- » resistance to grease, oil, and other

We supply:

- » Timing belts from 0.5 m length to 100 m, standard rolls
- » Endless spliced timing belts
- » Truly endless made timing belts

Standard product range											
Sectional profile (example only)											
Type	T 5	T 10	T 20	AT 5	AT 10	AT 20	L	H	XH	8M	14M
Shore hardness	92a	92a	92a	92a	92a	92a	92a	92a	92a	92a	92a
Feeder flexible steel wire in mm	0.3	0.6	0.9	0.51	0.9	1.21	0.6	0.6	0.9	0.9	1.21
Width tolerance in mm	0.5±	0.5±	0.5±	0.5±	0.5±	0.5±	0.5±	0.5±	0.5±	0.5±	0.5±
Height tolerance in mm	0.2±	0.2±	0.2±	0.2±	0.2±	0.2±	0.2±	0.2±	0.2-0.25±	0.2±	0.2±
Length tolerance	0.5±	0.5±	0.5±	0.5±	0.5±	0.5±	0.5±	0.5±	0.5±	0.5±	0.5±
approx. weight/meter in g/10 mm	24	48	77	30	64	100	39	45	100	69	110
Min. no of teeth per sprocket	10	12	15	15	15	18	12	14	18	18	25
Disk Ø in mm	15.05	36.35	92.65	22.65	45.9	111.75	35.66	55.25	124.53	44.47	108.7
Tension pulley-Ø in mm	30	50	120	60	120	180	60	80	150	120	180

The table above lists only a small portion of our extensive product range. Should you be interested in our standard range, we'll be happy to send you our technical overview.



Production

Figure left hand side:
Automatic welding
of V-guides

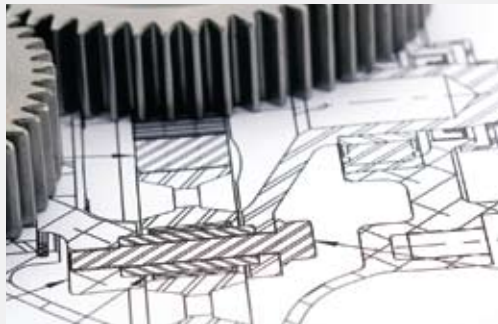


Figure right hand side:
Splicing of timing belts



Our state-of-the-art production methods allow us to produce:

- » up to 5,000 m of V-belts per day
- » up to 3,000 m PU-coatings per day



Joint techniques

Figure left hand side:
Example of a pre-
pared endless splice
for a timing belt

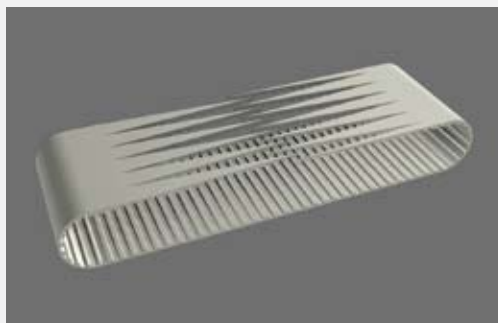


Figure right hand side:
Finger Punching-
machine

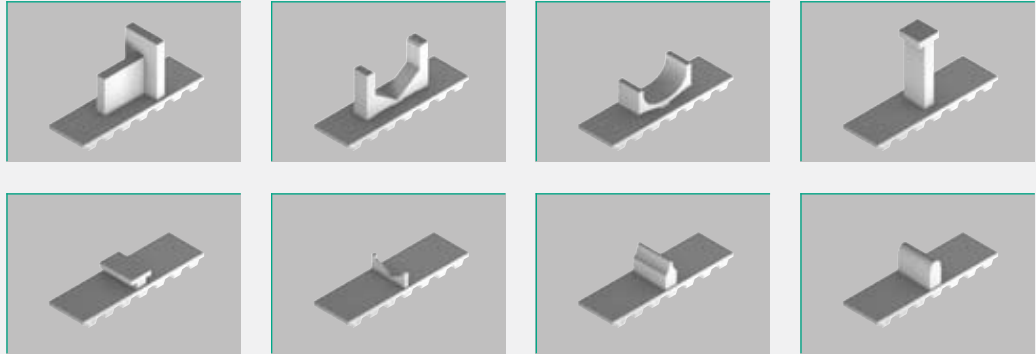


The geometry of our "finger-type" punching method depends on the required strength of the final product. Our joining technique optimizes the ratio between the strength of the original timing belt and the joint itself.

We now can manufacture joints that have a joint strength, which is up to 80% of the original timing belt's strength.

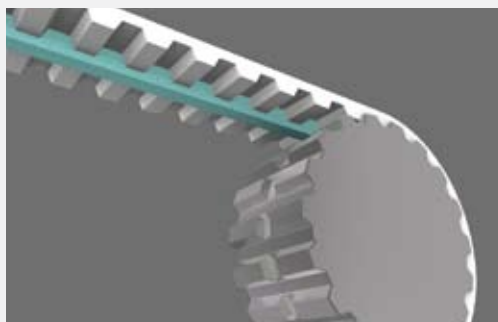
Cleats

Examples of various types of cleats



There are many types of cleats, which we consider "standard". In addition to these 65 standard shapes, we have developed a method of manufacturing the right cleat for you - even for small production quantities. We simply make a silicone mould, based on your requirements, and produce as many pieces as you wish. This is a cost-efficient method of production, which is second to none.

V-guides



V-guides		
Description	Shape	Dimensions
K 8	Trapezoid	8 x 5 mm
K 10	Trapezoid	10 x 6 mm
K 13	Trapezoid	13 x 8 mm
K 17	Trapezoid	17 x 11 mm

Of course, from an engineering point of view, we have the equipment to "weld" any desired V-guide to the bottom side of the timing belt (or to the top side). First, this necessitates milling out the teeth which requires a high-precision process. Our tools guarantee a flawless product of the highest quality.

Special surface coating



We are the experts, when it comes to coating of belts. Our state-of-the-art coating facilities allow us to meet almost all our customers' requirements.

- » surface coating up to 2,500 mm belt width
- » foil coating, using thermal stamping up to 150 mm belt width
- » surface grinding and finishing up to 300 mm belt width

We coat all timing belts and commercial conveyor belts.

Request our sample catalogue

» Surface Coatings – Our Standard program «



We surface-coat timing belts of commercially available widths, using either an adhesive method or a welding process, depending on the material used.



Surface grinding and finishing for belts up to 300 mm wide, as well as edge grinding with tolerances of ± 0.1 mm are possible.

Sprockets



We will be happy to provide you with the appropriate sprockets for your specific application, either in steel or aluminium, with or without stepped edge, and available with all bore diameters.

Tools

Figure top left:
Heating press for
conveyor belts

Figure top right:
Timing belt press

Figure bottom right:
"Finger-type" punch-
ing machine



We also offer the respective processing equipment for a large number of our products.

Contact us

Bode Belting GmbH
Reeperbahn 35 / House 2
D-21481 Lauenburg
Germany

T + 49.(0)41 53.55 86 57
F + 49.(0)41 53.55 86 75
info@bodebelting.de
www.bodebelting.de

Ask us for one of our partners in your area



Because of continuous development, the presented data is subject to alteration. This data replaces that included in previous publications. Bode Belting GmbH excludes any liability for the incorrect use of the stated information. Subject to the general terms and conditions of sale and delivery, as applied by its operating companies, are all activities performed and services rendered by Bode Belting GmbH.

© Bode Belting GmbH, 2007

Your local partner